

310230 343979

NESCAFE ORIGINAL Classic Granules 6x750g

Nescafe Original Classic 6x750g

PRODUCT DESCRIPTION

Soluble coffee

Brand	Nestle UK
Manufacturer Product Code	12533643
Product Type	Drink
Product Category	Tea & Coffee
Storage Type	Ambient
Erudus ID	45ed2692d8ee417a88029826a88d5cd3
Specification Type	Legacy



Inner Component GTIN	7613035298989
Outer Case GTIN	07613035298996



INGREDIENTS

Ingredient Declaration

Soluble coffee

ALLERGENS

Product Contains:

Celery/Celeriac	No	Mustard	No
Cereals Containing Gluten	No	Nuts (Tree)	No
Barley	No	Almond nuts	No
Oats	No	Brazil nuts	No
Rye	No	Cashew nuts	No
Wheat (including Spelt and Khorasan)	No	Hazelnuts	No
Crustacea	No	Macadamia (Queensland) nuts	No
Eggs	No	Pecan nuts	No
Fish	No	Pistachio nuts	No
Lupin	No	Walnuts	No
Milk	No	Peanuts	No
Molluscs	No	Sesame Seeds	No
		Soybeans	No
		Sulphur Dioxide and Sulphites	No

SUPPLEMENTARY INGREDIENT INFORMATION

Palm Oil	No
Hydrogenated Vegetable Oil/Fat	No
GM Protein/DNA	No

ADDITIVES

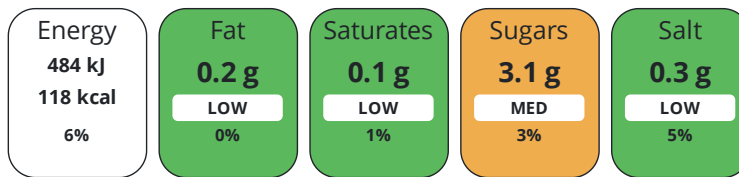
Product Contains:

Artificial Antioxidants	No	Artificial Flavourings	No
Artificial Colours	No	Artificial Preservatives	No
Artificial Flavour Enhancers	No	Artificial Sweeteners	No
Suitable for Coeliacs	Yes	Halal Diet	Suitable for
Kosher Diet	Suitable for	Vegetarian Diet	Suitable for
Vegan Diet	Suitable for		

DIET SUITABILITY

NUTRITIONAL INFORMATION

Each 100g/ml portion contains:



of your reference intake.

Typical values per 100g/ml : Energy 118kcal / 484kj

Nutrient	per 100g/ml	RI per 100g/ml
Energy (kj)	484 kj	6%
Energy (kcal)	118 kcal	6%
Fat	0.2 g	0%
of which Saturates	0.1 g	1%
Carbohydrate	3.1 g	1%
of which Sugars	3.1 g	3%
Fibre	34.1 g	
Protein	7.8 g	16%
Salt	0.3 g	5%

SUPPLEMENTARY NUTRITIONAL INFORMATION

HFSS (HIGH IN FAT, SALT AND SUGAR)
HANDLING & STORAGE INFORMATION

HFSS Status	No
--------------------	----

Directions For Use

For the perfect serve Always use a dry measure and freshly boiled water (not boiling hot) 1 rounded teaspoon (minimum 1.8g) per mug 1 rounded tablespoon (minimum 6g) per pint

Storage Instructions

Store in a cool, dry place

Shelf Life from Time of Production	720 Days
---	----------

FSSC 22000	
-------------------	--

ACCREDITATIONS/ CERTIFICATIONS/ ASSURANCE SCHEMES ORIGIN

Product Country of Origin/Place of Provenance	United Kingdom
--	----------------

PRODUCT CHARACTERISTICS

Standards Testing			
Do you undertake trend analysis of microbiological results?	No	Is shelf life testing undertaken?	No

CONFIGURATION

Case Configuration

Inner Pack Configuration

Total Quantity of Inner Components in Outer Case	6 Units
Is the Outer Case Splittable?	Yes

PRODUCT WEIGHTS

Inner Component	
Variable Weight Consumer Item	No
Inner Component Weight	750 g
Weight/Volume	
750g net weight	
Outer Case	
Outer Case Gross Weight	6.27 kg
Outer Case Net Weight	4.5 kg

PRODUCT DIMENSIONS

Inner Component	
Inner Component Depth	210 mm
Inner Component Width	108 mm
Inner Component Height	193 mm
Outer Case	
Outer Case Depth	424 mm
Outer Case Width	323 mm
Outer Case Height	194 mm

PALLET INFORMATION

Quantity of Cases Per Pallet Layer	8 Cases	Pallet Height	1.33 MTR
Quantity of Layers Per Pallet	6 Layers	Pallet Gross Weight	331 kg
Quantity of Cases Per Pallet	48 Cases		

PACKAGING

Inner Component Packaging						
Type	Materials	Weight	Recycled Plastic %	Recyclable	Returnable	Composite
Tin	Plastic	38 g	- %			
Tin	Steel	238.5 g	- %			
Outer Case Packaging						
Type	Materials	Weight	Recycled Plastic %	Recyclable	Returnable	Composite
Case	Plastic	80 g	- %			
Case	Paper/Cardboard	23.6 g	- %			

OTHER INFORMATION CONTACT INFORMATION

Address
 Nestle UK
 Nestlé UK Ltd
 PO Box 207
 York
 YO91 1WS
 England

P: (Phone) 0800 00 00 30 (UK)

Complaints Contact
 consumer.services@uk.nestle.com

P: (Phone) 0800 00 00 30 (UK)

The information on the [Erudus System](#) has been supplied by the manufacturers of the products and, whilst the owners of the Erudus System take steps to ensure the information is regularly updated, they give no warranty and no guarantee that the information is accurate. Product information and ingredients may change, please always read product labels carefully in addition to using the information provided by Erudus.

We do not accept liability for any inaccuracies or incorrect information contained on this site.
Please visit <http://www.erudus.com/terms-and-conditions> for full terms and conditions.